

BrightAuthor 2.2 Release Notes

BrightSign is pleased to announce the release of BrightAuthor 2.2 software.

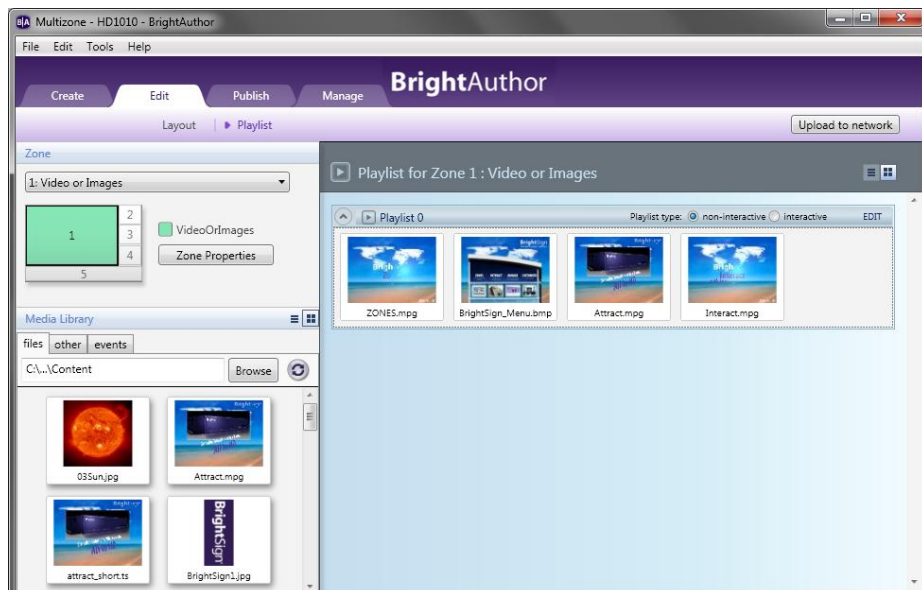


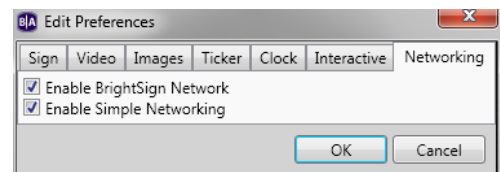
Table of Contents

What's New in BrightAuthor Software v2.2	2
Network Features	2
Interactive Playlist Features	2
Additional New features	3
New Layout & Menus	4
Create (Dynamic Playlists)	4
File Menu	4
Tools Menu	5
Edit Menu	6
Edit Tab – Media Library	6
Advanced Commands	7
Multiple Touch Event View	7
Brightsign Network Download Progress	8
Fixes & Known Issues	8
Download the Latest Software and Guides	8
BrightAuthor Requirements	8
Getting Help & Providing Feedback	8

What's New in BrightAuthor Software v2.2

Network Features

- **Dynamic Playlists** – Works like Media RSS feeds, but reside on your BrightSign Network account; accessible from a pull-down menu when you add a Dynamic Playlist to any BrightAuthor project.
- **Download Progress** – View status of last completed or any currently downloading files
- **Preload Content on BrightSign Network Setup Card** – The Copy Content option in the Setup Menu allows you to publish the content that's in the current schedule in your BrightSign Network Account to a flash card, when creating setup files allowing you to avoid a large initial download.
- **Current Presentations Only under Manage Status** - Under Manage Status, to the right of each group, only current presentations are shown. Previously, any presentation in the schedule, including ones from previous weeks, would be listed for a group.
- **Delete Presentations older than 24 hours** - You can now delete presentations from the library that are more than 24 hours old. For example, if a presentation was last scheduled to play on Monday, you can delete it from the library on Wednesday.
- **Hide Network Options** – Under Edit, Preferences, you can now disable different network options that hide Network Features in BrightAuthor Setup and Publish Menus.
- **Setup Wireless Units** – Configure BrightSign HD210W and HD1010W for Wireless connectivity
- **Additional BrightSign Network Device controls** – under Tools->Advanced, you can perform the following actions on a unit the next time it reboots or contacts the BrightSign Network Server.
 - Forced Log Uploads – upload logs to BrightSign Network Account (not currently supported)
 - Forced Reboots - forces the player to restart
 - Recovery without reformatting – forces player to download latest current-sync and autorun script
- **Setup Stand-Alone Units**– Configure network, logging, and other settings for units not using Simple File Network or BrightSign Network



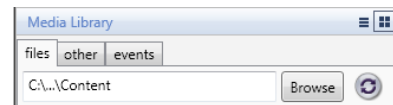
Interactive Playlist Features

- **VideoTimeCode events** – allows you to execute commands at specific times during a video
- **Expand canvas when items are placed at the edge** - When creating or editing interactive playlists, workspace automatically expands.
- **Stateless Transitions** – These transitions don't involve files
 - Return to prior state, to the content that played before the current one
 - Remain on current state - allows you to accept input without switching to new content or restarting the current content. For example, you can accept a button press that changes volume, pauses, or sends a command.
- **Touch cursor display mode** - Set cursor to be always on, always off, or use default behavior.
- **Control-A to select all items** - You can select all states and add inputs/events that affect multiple files. You can also Shift-Click or Control-Click to select multiple files

- **Apply multiple transitions at once** – With multiple states selected, you can draw connections so that input is accepted in all or all selected states. All events supported except Touch events.
- **Support for multiple serial ports** – You can designate the port to send to or receive input from
- **Support for non-printable keyboard input** – allows values like F keys, space bar, Esc, etc.
- **New Advanced Commands**
 - Send IR commands
 - Send multiple serial bytes separated by commas
 - Power Save Mode – enable or disable sync over HDMI and VGA
 - Pause and Resume audio and video
 - Pause Timer command - resume after x number of milliseconds

Additional New features

- **Minimum Firmware Check** – automatically checks for incompatible firmware when publishing updates on BrightSign Network; Lists minimum firmware required to support installed BrightAuthor under Setup and Publish menus
- **Refresh media library** - You can now refresh the media library to view content added to the library while BrightAuthor is open.
- **Export Presentation** - Allows you to export all content and project file for use on another system
- **Logging** - BrightAuthor now allows you to enable playback (proof of play), diagnostic, event (inputs) logging; stored locally, not uploaded currently. Support for uploads to a web server and to the BrightSign Network coming soon.
- **Generate thumbnails in background**– BrightAuthor performs better now by generating thumbnails using a background thread
- **Chinese language support** – BrightAuthor's user interface is now available in Chinese.



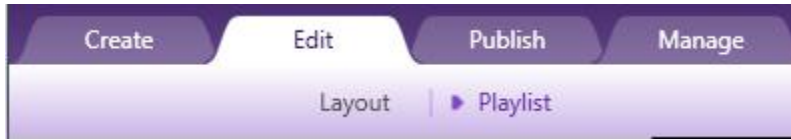
New Layout & Menus

BrightAuthor 2.2 has interface updates including new menu items, settings, tabs, status screens, etc.

Create (Dynamic Playlists)

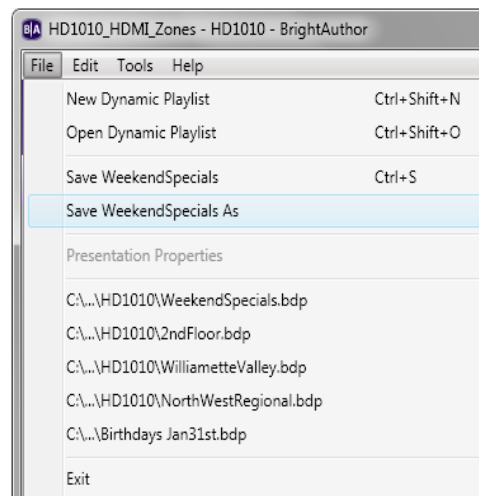
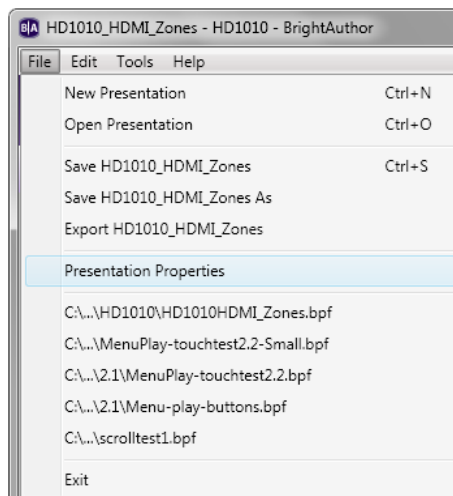
BrightAuthor now includes a fourth tab

- Under Create, you can add content to or Edit a Dynamic Playlist s.

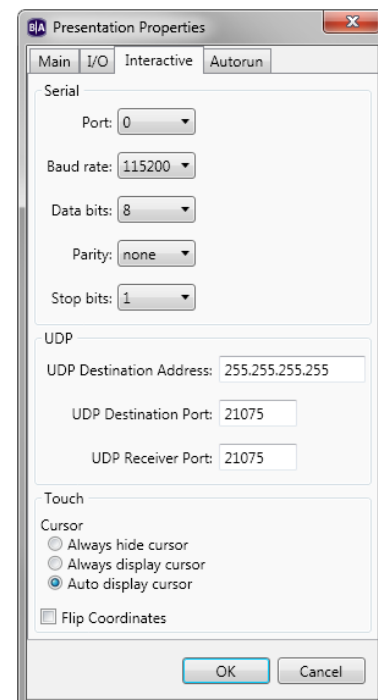


File Menu

- **Save & Save As** - changes as you move between Edit & Create tabs
 - Save Playlist As – dynamic playlists
 - Save Project As
- **Export** – exports project file and associated content



- **Presentation Properties -> Interactive**
 - Serial Ports – configure settings for multiple serial ports
 - Cursor Enable / Disable - allows you to enable or disable the cursor, or use previous cursor behavior where cursor is only present if there is more than one touch region on the screen



Tools Menu

- **Setup BrightSign Unit**
 - Stand-Alone setup
 - Wireless setup – configure HD210W and HD1010W wireless units
 - Logging - enable Event, Usage, and Diagnostic logging & setup upload frequency
 - Firmware – now lists minimum supported firmware for current BrightAuthor release
 - Copy content from.. – Preload BrightSign Network schedule on setup flash card

BrightSign Unit Setup

Name Specification

Name:

Description:

Customization:

Use name only

Append unit ID

Network Properties

Time zone:

Time server:

Obtain an IP address automatically

Use the following IP address:

IP Address:

Subnet mask:

Default gateway:

Broadcast:

DNS 1:

DNS 2:

DNS 3:

Wireless

SSID:

Security key:

Firmware

Production Release : Version 3.3.78

Beta Release : Version 3.5.62

Minimum Compatible Release : Version 3.3.78

Select specific file

Do not update

Unit Configuration

Standalone

Networked with the BrightSign Network

Group:

Network Connection Frequency:

Connect to Server:

Limit content downloads

Start of range: :

End of range: :

Content:

Copy content from the current published schedule

Networked with Simple File Networking

Logging

Enable playback logging

Enable event logging

Enable diagnostic logging

Upload logs

On startup

At specific time each day

Upload time: :

Relative URL for log handler: (e.g. loghandler.php)

- **Advanced -> Unit Control**
 - Reboot Unit – add serial unit of a unit to restart it on the next connection
 - Recovery (no reformat) – puts unit into recovery mode without reformatting the flash card
 - Upload logs – forces a unit to upload logs on the next connection

Advanced Tools

Update Autorun Unit Control

Enter the BrightSign serial number

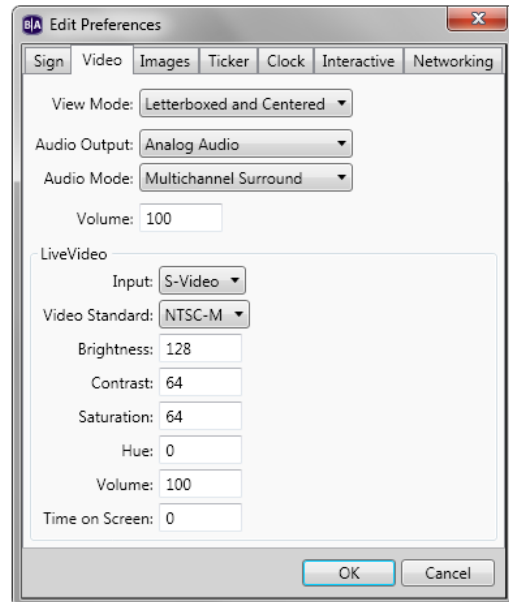
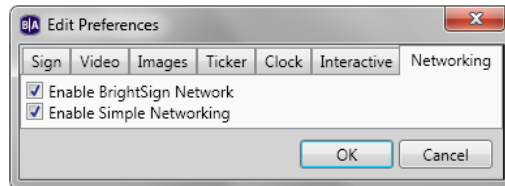
Serial Number:

Action:

- Reboot unit
- Upload logs
- Recovery - reformat
- Recovery - don't reformat

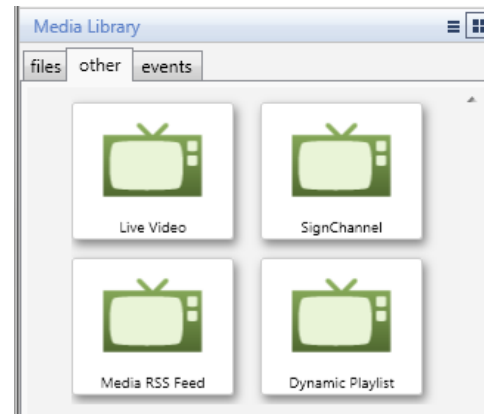
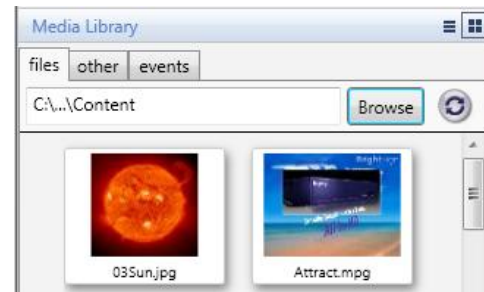
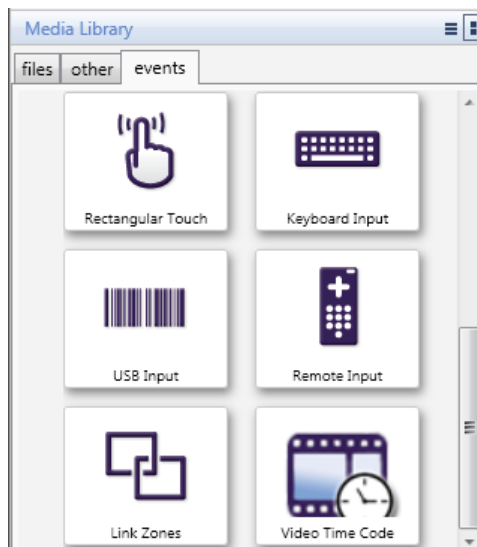
Edit Menu

- Video – default video settings now includes audio volume and audio output
- Interactive – default settings include cursor behavior and settings for each serial port
- Networking – Enable or Disable BrightSign & Simple File Network options, removing them from UI



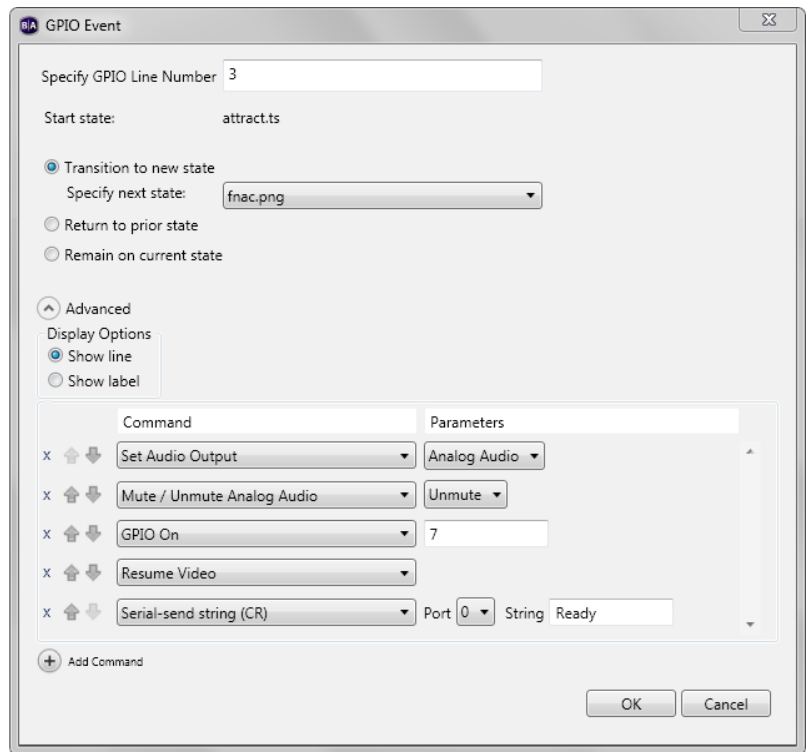
Edit Tab – Media Library

- Refresh Button – re refreshes media library folder
- Dynamic Playlist
- Video Time Code events



Advanced Commands

- Set , Change, or Mute volume
- Serial bytes – send string of bytes over serial port
- Pause, Resume, Pause for set amount of time
- Enable/Disable Monitor Powersave mode
- Return to Prior State
- Remain on current state

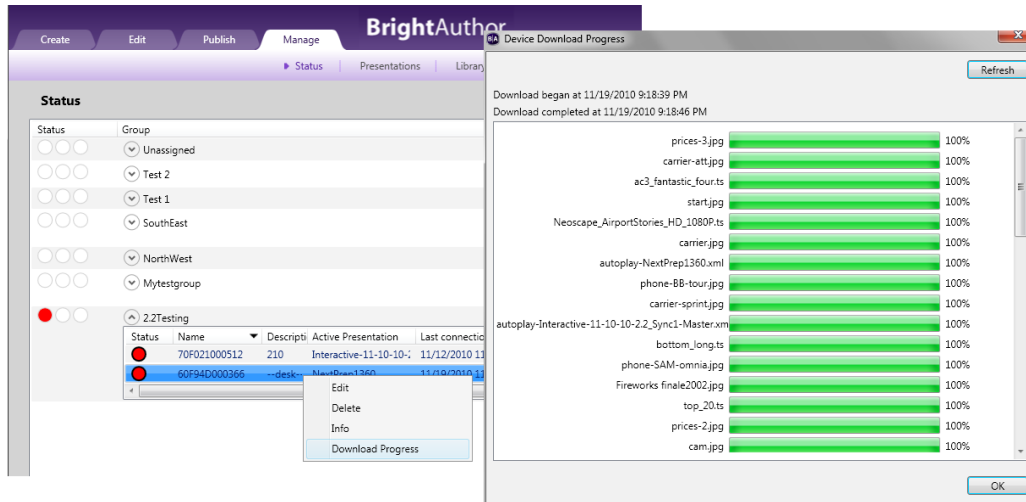


Multiple Touch Event View

- All touch events for an image are visible



Brightsign Network Download Progress



Fixes & Known Issues

- Fixed: RSS feeds now update properly
- Fixed: When changing the screen dimensions, adjust touch regions appropriately
- Fixed: Limit number of retries after network communication errors
- Sluggish going from one tab to another (edit, to Publish, Publish to Manage)

Download the Latest Software and Guides

- [BrightAuthor Setup v2.2](#)
- [BrightAuthor 2.0 Tutorials](#)
- [BrightAuthor QuickStart Kit](#)
- [Brightsign Firmware v3.3.78](#)

BrightAuthor Requirements

- PC with Windows XP or Vista or Windows 7, plus Microsoft .Net Framework 3.5 or later
- Brightsign HD110, HD210, HD210W, HD410, HD1010, or HD1010W
- Firmware version 3.3.78 or later

Getting Help & Providing Feedback

Please download the [Quickstart Kit](#), [BrightSign Demos](#), and visit the [Tutorials](#) page. To help us get the most out of testing, please provide feedback in the [Brightsign forum](#).